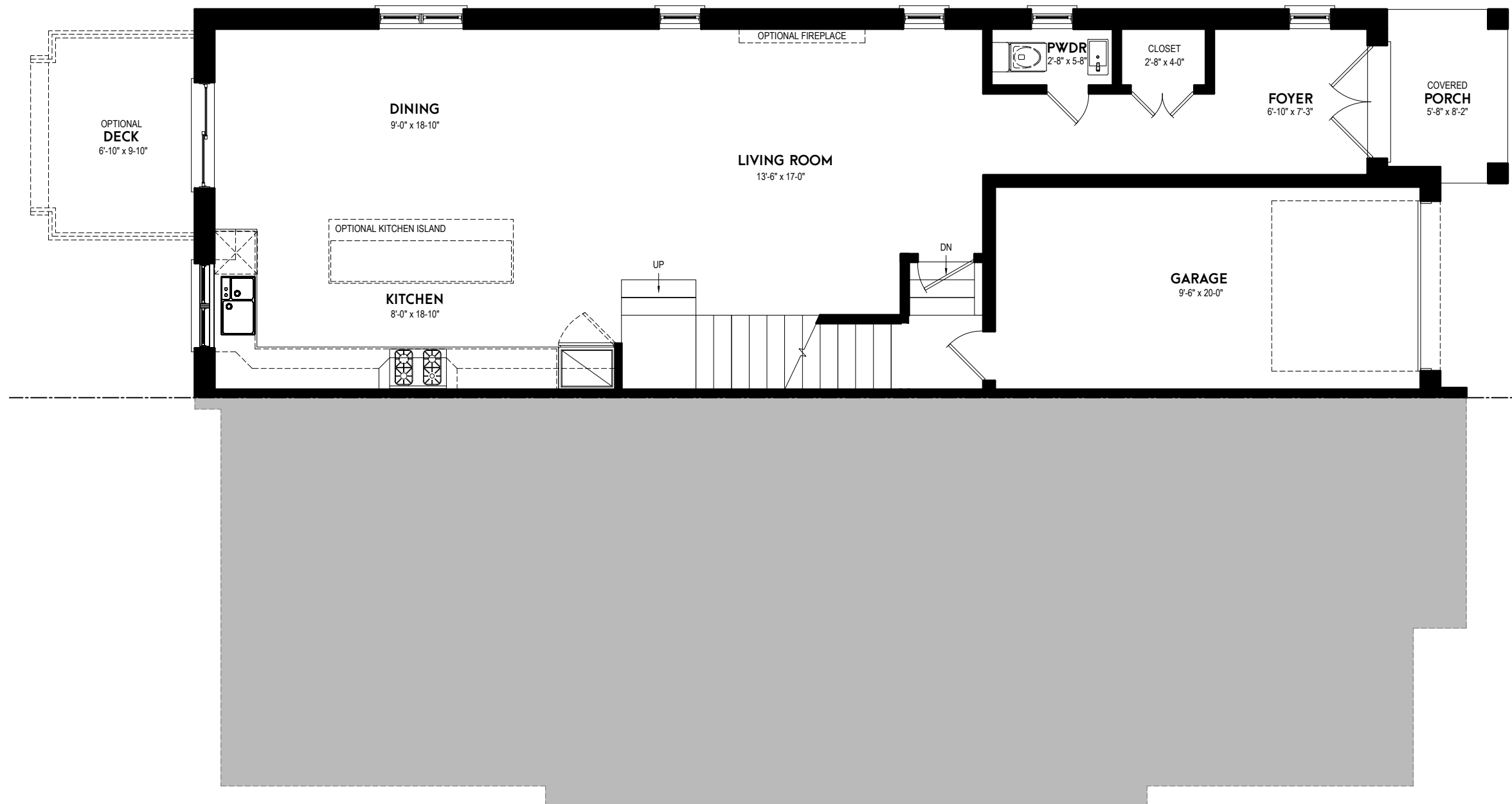


1/4"=1'-0"
BASEMENT FLOOR PLAN OPTIONAL FINISHED
 656.52 SQ.FT



1/4"=1'-0"
GROUND FLOOR PLAN
 839.40 SQ.FT

1/4"=1'-0"
GROUND FLOOR PLAN



1/4"=1'-0"
SECOND FLOOR PLAN
 1001.90 SQ.FT